



Sponsored by



Please
affix
stamp
here

Enfield in Bloom Garden Competition 2024
67 Firs Park Avenue
London
N21 2PR

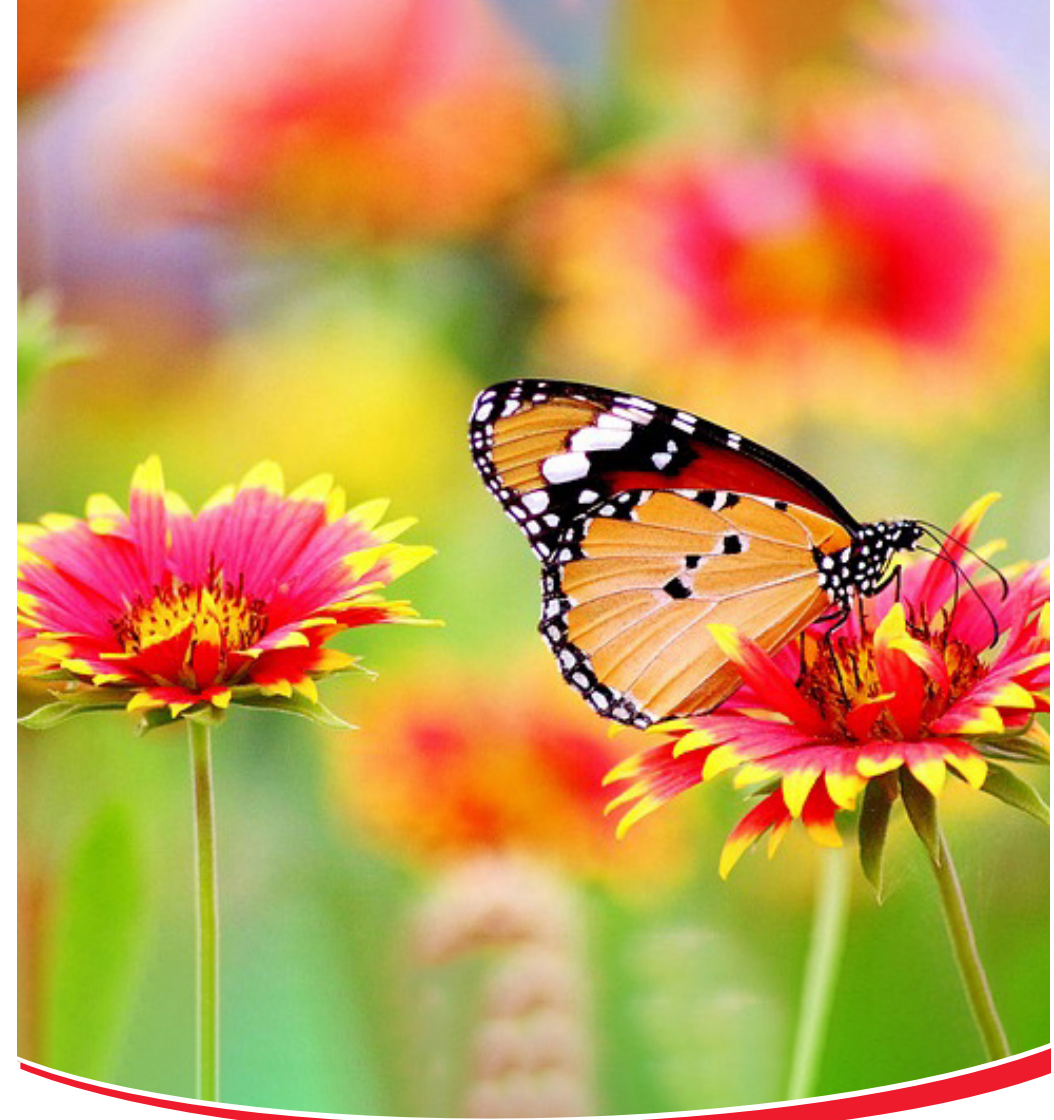
The Annual Garden Competition

For us one of the most important things we can do to combat climate change is to emphasise the personal, social and environmental benefits of gardening and of course the Enfield in Bloom gardening competition is one of the very best ways in which we can do this.

Tips For a Greener Home and Garden

- 1. Use pesticides and weedkillers as a last resort**
Work with nature to control pests and weeds instead.
- 2. Ditch the peat**
Help protect environmentally precious peat bogs by choosing peat-free products.
- 3. Use water wisely**
Get a water butt
Thousands of litres of water fall on the average rooftop every year. For information on waterbutts and compost bins: www.enfield.getcomposting.com
Recycle your water
Water that has been used in the home, except water from toilets, is called greywater and can be reused in the garden.
- 4. Compost garden and kitchen waste**
Put kitchen and garden waste to good use.
www.enfield.getcomposting.com
- 5. Welcome wildlife**
Create wildlife habitats and provide sources of food. Flowering plants that offer nectar and pollen will attract bees, butterflies and other insects. Trees and shrubs that produce berries will help feed birds. For information on meadows: www.londoninbloom.org.uk
- 6. Think before paving over your garden**
This contributes to flooding, which can sometimes cause sewage and pollutants to be washed into local waterways. Consider using materials that absorb rainwater or let it drain through.
- 7. Choose your wood carefully**
Look for labels that show it has been produced in an environmentally friendly way. Common labelling schemes include the Forest Stewardship Council (FSC) or Programme for the Endorsement of Forest Certification Schemes (PEFC).
- 8. Reclaim and recycle**
Use recycled materials. Turn old containers of all kinds into unusual plant pots and containers for growing fruit and vegetables.
- 9. Choose your charcoal carefully**
Only use charcoal that comes from forests that are sustainably managed. Look for (FSC), (PEFC), or other forest certification schemes.
- 10. Grow your own**
Growing just a little bit of your own produce can help reduce the environmental costs of packaging and transporting food.

WE NOW NEED NEW COMMITTEE MEMBERS, SO IF YOU CAN VOLUNTEER A LITTLE TIME TO HELP WITH OUR ENDEAVOURS, PLEASE CONTACT US.



www.enfieldinbloom.org.uk

Sponsored by



Competition Categories

Judging will take place between 26th June – 8th July

The Enfield in Bloom Awards Ceremony will be held in October at the Chickenshed and prizes will be presented by the Mayor and Enfield in Bloom Sponsors.

A competitor may not enter the same display in more than one category.

Best Large Front Garden

Over 20 square metres.

Sponsored by Clockhouse Nursery Ltd

Best Medium Front Garden

Under 20 square metres.

Sponsored by Clockhouse Nursery Ltd

Best Small Front Garden/Balcony

Under 10 square metres to include containers, window boxes and hanging baskets.

Sponsored by Clockhouse Nursery Ltd

Best Front Garden also used for Parking

Any size. Excluding properties with garage facilities.

Sponsored by Clockhouse Nursery Ltd

Best All Year Round Front Garden

Sustainable Planting

Open to front gardens of any size.

Sponsored by Clockhouse Nursery Ltd

Best Residential Street

Open to groups of eight or more dwellings.

Sponsored by AH Nicholls & Sons

Best Communal Gardens

Open to all blocks of flats and retirement homes.

Sponsored by George Kaccouris

Best Display in a Public Area

Open to all civic buildings including Fire and Police Stations, churches etc.

Sponsored by Tesco Enfield CFC 6440

Best School Grounds with Environmental and Educational Aspect

Open to all schools.

Sponsored by Enfield NEU

Best Flower Bed or Street Planter

Sponsored by Tottenham Hotspur

Best Environmental/Wildlife Garden/Meadow

Open to all Entrants.

Sponsored by Tottenham Hotspur

Exceptional Horticultural Contribution for the Local Community

Open to all open spaces including; alleyways, verges, park beds or walled gardens visible or accessible to the public

Sponsored by GP Garden Services

Innovative Growing Space or Allotment

Any size.

To encourage 'grow your own fruit and veg'.

Open to local residents.

Sponsored by Ritec International Limited

The Livia Award

Presented to an individual who has made an outstanding contribution to the local environment.

Sponsored by the Galli-Atkinson family

All entries must be visible to the public except the Environmental Garden, and the innovative growing space/allotment – which can be in the back garden. Good Luck!



2024 Competition Entry Form

Mr/Mrs/Ms _____

Company/Group/School _____

Address _____

Tel. No _____

Email Address _____

Important please complete, state which category entered (ie Best Large Front Garden)

All entries must be within the London Borough of Enfield.
I/we agree to abide by the judges' decision which will be final.

Signed _____ Date _____

I'm interested in volunteering (complete details above)

moisten gum and fold along this line

Please complete and return by the 24th June 2024.

Or enter online at www.enfieldinbloom.org.uk

if you need any help, information or advice, please contact:

Ivor Tel: 0208 364 0872 or Email: ivor.wiggett@outlook.com

We are always in need of help and if you would like to get involved by becoming a Committee member, volunteer gardener, sponsor or perhaps just make a cash donation please contact us.

